

# Fulflo® FE Filter Vessels

- Carbon Steel
- 304L and 316L Grade Stainless Steel

## Multi-Cartridge Filter Vessel Series

### FE Model Cartridge Filter Vessels Designed for Economical Filtration of Liquids and Gases

The FE Filter Vessel Series accommodates double-open-ended (DOE) and single-open-ended filter cartridges. PED compliance consult Parker.

#### Applications

- Potable Water
- Process Water
- Edible Oils
- Coatings
- Lubricants
- Coolants
- Cutting Oils
- Solvents



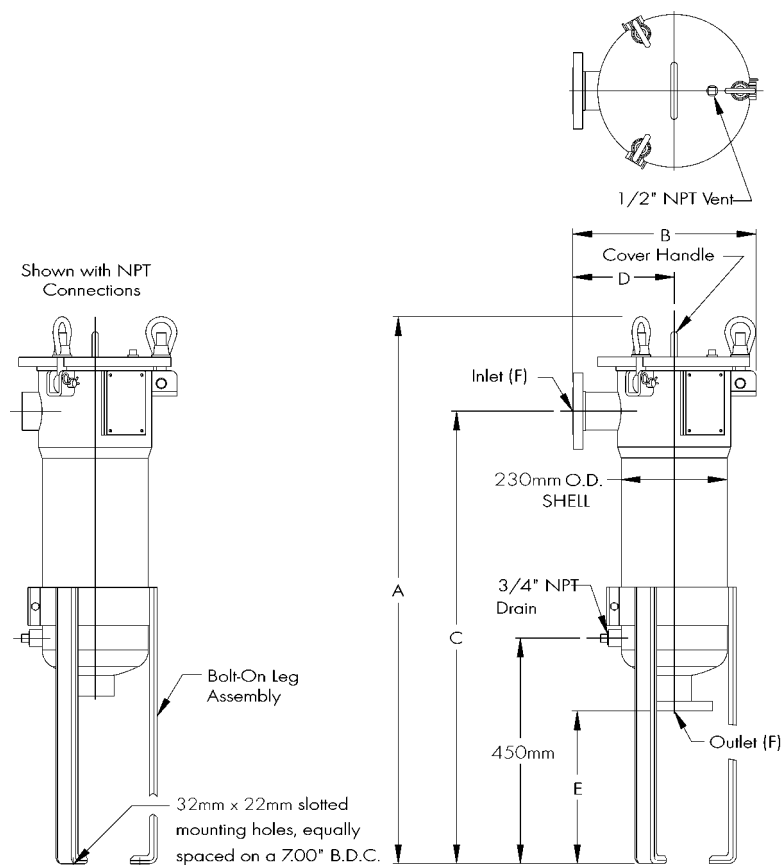
#### Design Features

- Single O-ring design closure assures quick, positive cover sealing.
- Swing bolts with eyenuts for fast, easy opening and closing of cover.
- Maximum design pressure is 150 psig (10.3 bar) at 450°F\* °C) and 200 psig (14 bar) at 100°F (38°C) plus full vacuum.
- Buna-N O-ring standard with EPR, Viton\*\* and Teflon\*\* available.
- ASME Code UM stamp is standard (U stamp is optional).
- Threaded vent and drain connections.
- Adjustable leg height.
- Threaded or flanged inlet and outlet.
- Side inlet; cover opens without disconnecting piping.
- Side inlet, bottom outlet and crevice-free welded design provide a smooth interior for easy wash-out and cleaning.

### Process Filtration Division

**WARNING! FAILURE OR IMPROPER SELECTION OR IMPROPER USE OF THE PRODUCTS AND/OR SYSTEMS DESCRIBED HEREIN OR RELATED ITEMS CAN CAUSE DEATH, PERSONAL INJURY AND PROPERTY DAMAGE.**  
This document and other information from Parker Hannifin Corporation, its subsidiaries and authorised distributors provide product and/or system options for further investigation by users having technical expertise. It is important that you analyse all aspects of your application and review the information concerning the product or system in the current product catalogue. Due to the variety of operating conditions and applications for these products or systems, the user, through its own analysis and testing, is solely responsible for making the final selection for the products and systems and assuring that all performance, safety and warning requirements of the application are met. The products described herein, including without limitation, product features, specifications, designs, availability and pricing, are subject to change by Parker Hannifin Corporation and its subsidiaries at any time without notice.

# Multi-Cartridge Filter Vessel Series



## Design Specifications

Model	No. & Length of Cartridges (in)	Typical Aqueous Flow† (l/min)	Dimensions (in)		C mm	D mm	E mm	F mm	Shipping Weight (Kg)	Volume (litres)
			A mm	B mm						
FE6-1-2	(6) 10	114	840	310	650	150	340	2 NPT	37	14
FE6-1-2F	(6) 10	114	840	370	650	200	300	2 NPS	41	14
FE6-2-2	(6) 20	227	1090	310	910	150	340	2 NPT	40	20
FE6-2-2F	(6) 20	227	1090	370	910	300	300	2 NPS	43	20
FE6-3-2	(6) 30	341	1350	310	1160	150	340	2 NPT	42	29
FE6-3-2F	(6) 30	341	1350	370	1160	200	300	2 NPS	45	30
FE6-3-3F	(6) 30	341	1350	370	1160	200	350	3 NPS	50	30

† Actual rate is dependent on fluid viscosity, micron rating, contaminant and media type. Consult flow charts for each application.

## Ordering Information

4L	FE	6	3	2F
Material	Model	Number of Columns	Number of 254mm Cartridges/Column	Inlet/Outlet Flange Size
None = Carbon				
Steel			1	2
4L = 304L			2	3
Stainless Steel			3	No F = NPT
6L = 316L				
Stainless Steel				

## Process Filtration Division

\* Operating temperature limited to 250°F (121°C) by standard Buna-N O-ring and exterior paint on carbon steel models. Optional O-ring materials are available.

\*\* A trademark of E. I. du Pont de Nemours & Co.

**Parker Filtration**  
 Filter Division Europe  
 Shaw Cross Business Park  
 Dewsbury, West Yorkshire  
 WF12 7RD, England  
 Phone: +44 (0) 1924 487000  
 Fax: +44 (0) 1924 487001  
 Website: www.parker.com

